

**The Community School of Auchterarder
Music Department**

Name:

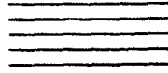
Class:

S1
MUSIC NOTEBOOK



Section 1: Note Names

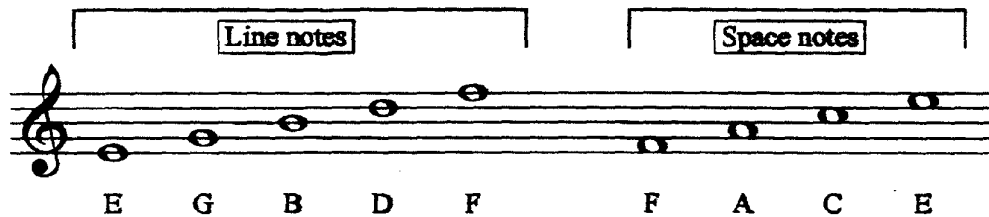
The STAVE is made up of five lines and four spaces and allows us to identify different notes.



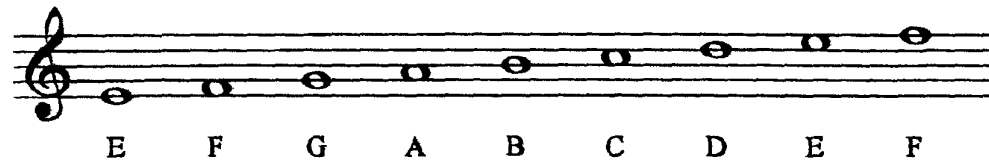
The treble clef, or G clef, is placed at the beginning of the staff.



Letter names of notes in the treble clef.



Here are all of the above notes in their ascending order.
As the notes rise on the staff, they also rise in pitch.



MIDDLE
C

E F G A B C D E F

Play this on a keyboard.
Listen: as you move to the right, the pitch rises.

E F G A B C D E F

EXERCISE 1

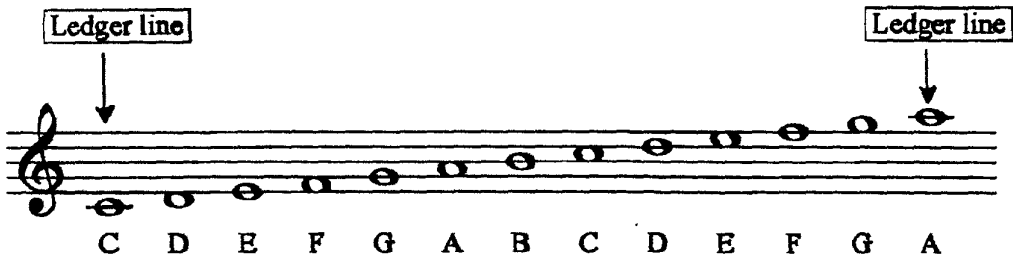
Write the letter name of each of these notes. The first answer has been done for you.

Names G

Names

Sometimes musical notes are lower than the bottom line or higher than the top line of the staff. This means we need to add other lines. These are called **ledger lines**.

We are going to add one extra ledger line at the bottom and one extra at the top.



EXERCISE 2

Write the letter name of each of these notes. The first answer has been done for you.

A musical staff with a treble clef and a key signature of one flat (Bb). The staff contains seven notes. The first note is on the bottom ledger line and is labeled "F". The other notes are on the bottom line, first space, second space, second line, and top line. Below the staff, the word "Names" is followed by a series of blank lines for writing the letter names of the notes.

A musical staff with a treble clef and a key signature of one flat (Bb). The staff contains seven notes. The first note is on the bottom ledger line. The other notes are on the bottom line, first space, second space, second line, and top line. Below the staff, the word "Names" is followed by a series of blank lines for writing the letter names of the notes.

EXERCISE 3

The following notes spell words. Write the words in the boxes.

The first answer has been done for you.

(a) (b) (c)

Names

(d) (e)

Names

(f) (g) (h)

Names

EXERCISE 4

This time the words are given. Draw a correct note for each letter.

The first answer has been done for you.

(a) (b) (c)

B E E F E D G E A C E

(d) (e) (f)

D A D F A C E D E E D

(g) (h) (i)

E G G B A D G E C A G E

Section 2: Repetition and Sequence

To repeat a section of music means to play exactly the same thing again.
Here is an example of repetition.

The second pattern of notes is exactly the same as the first.

EXERCISE 5

Copy each group of notes into the space provided and also name the notes.

(a)

Names _____

(b)

Names _____

(c)

Names _____

(d)

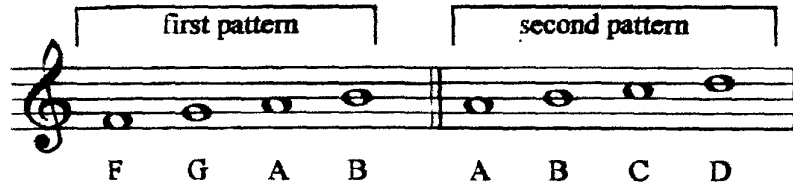
Names _____

(e)

Names _____

A **sequence** copies a pattern or shape at a different pitch.

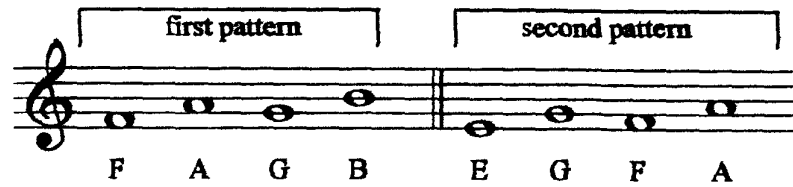
Here is an example of **sequence**.



The second pattern of notes is two notes higher than the first pattern.

Play this on a keyboard and listen to how it sounds.

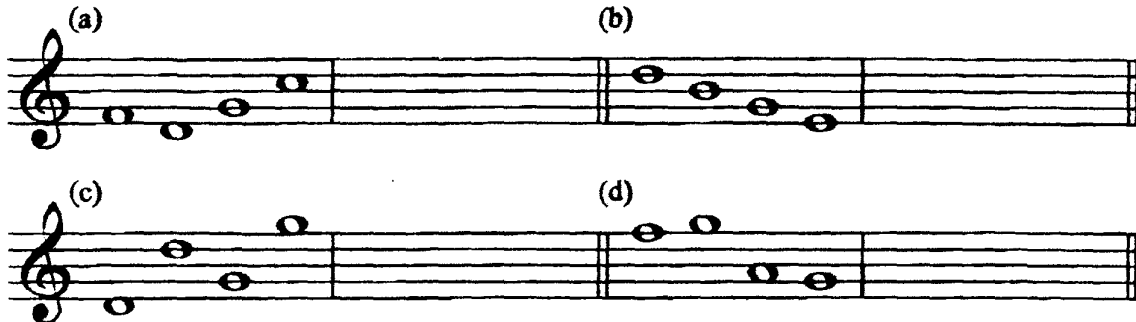
Here is another example. This time the **sequence** is lower.



The second pattern of notes is one note lower than the first pattern.

EXERCISE 6


Write the following sequences one note **HIGHER**.



EXERCISE 7

Write the following sequences one note LOWER.


(a)  (b) 


(c)  (d) 


EXERCISE 8


Look at each exercise and write down what you see.

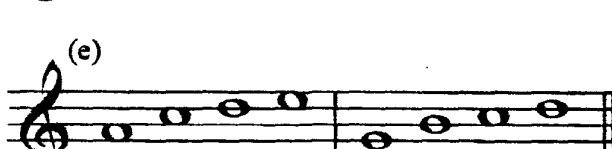
Choose from **repetition** or **ascending sequence** or **descending sequence**.

(a)  This is _____

(b)  This is _____

(c)  This is _____






(d)  This is _____

(e)  This is _____

Section 3: Rhythm

Notes can have different pitches and different lengths.
The shape of the note shows how long it lasts.
Every shape has a name.

Here are some common notes:

Note	Length	Name
	4 beats	semibreve
	3 beats	dotted minim
	2 beats	minim
	1 beat	crotchet
	1 beat	2 quavers

EXERCISE 10

In each of the following examples, add ONE note at the places asterisked, to complete the bar. Make sure that the TOTAL NUMBER of beats in each bar matches the TOP number in the time signature.

(a)

2/4

(b)

3/4

3/4

(c)

4/4

4/4

(d)

4/4

4/4

